

Breathing Apparatus



Survival Suit



Dry Chem Extinguisher



Co2 Extinguisher



Emergency Fuel Shutoff



Epirb



Emergency Pump Engine Shutdown



Fire Axe



Life Ring



FE Firemens Outfit



First Aid Kit



Spill Response Kit



Life Jacket



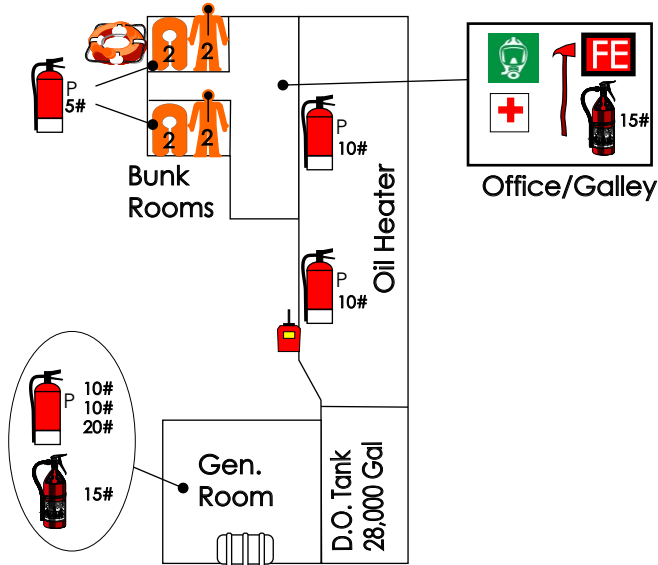
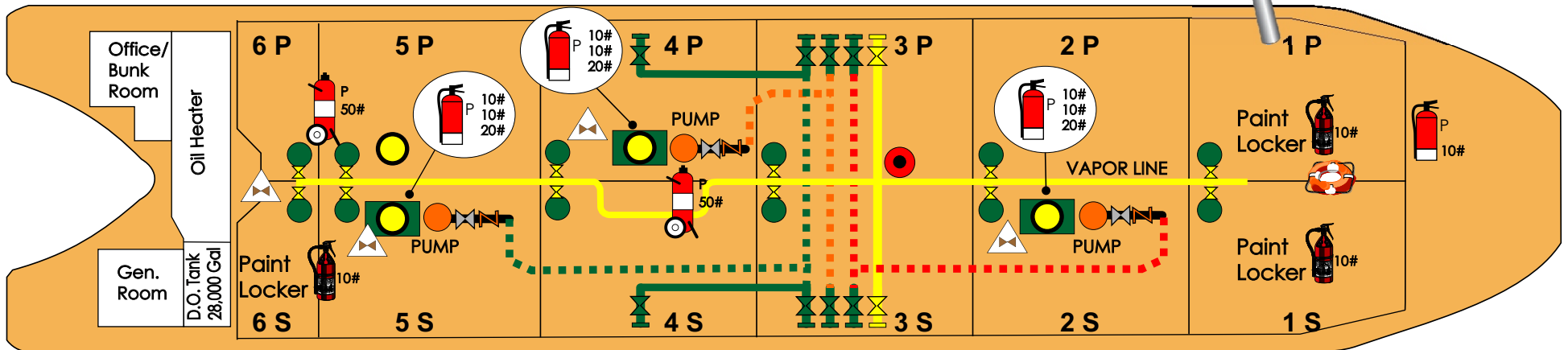
6 Man Life Raft



50# B-V Dry Chemical Extinguisher

PENN 120

FIRE PLAN



425'3" X 72'7" X 41'
 OPA 90 DOUBLE HULL BARGE
 YEAR BUILT : 2002
 OFFICIAL No.1134602
 IMO # 1518341
 GROSS TONS: 7320 GRT
 GROSS TONS: 9424 ITC
 PUMPS - 3 DEEPWELLS

CAPACITY - 118,988.48 BARRELS
 @ 96% (Approx)

1 PORT - 7630.54	1 STARB - 7620.83
2 PORT - 10620.64	2 STARB - 10562.31
3 PORT - 10639.39	3 STARB - 10611.28
4 PORT - 10552.59	4 STARB - 10618.48
5 PORT - 10617.79	5 STARB - 10556.65
6 PORT - 9494.32	6 STARB - 9463.66