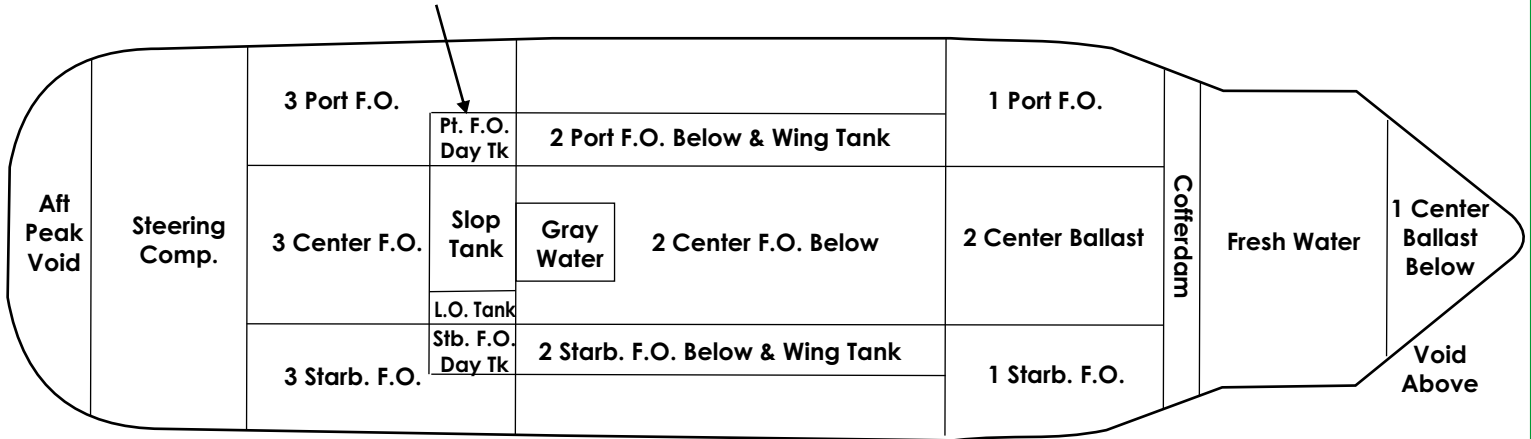
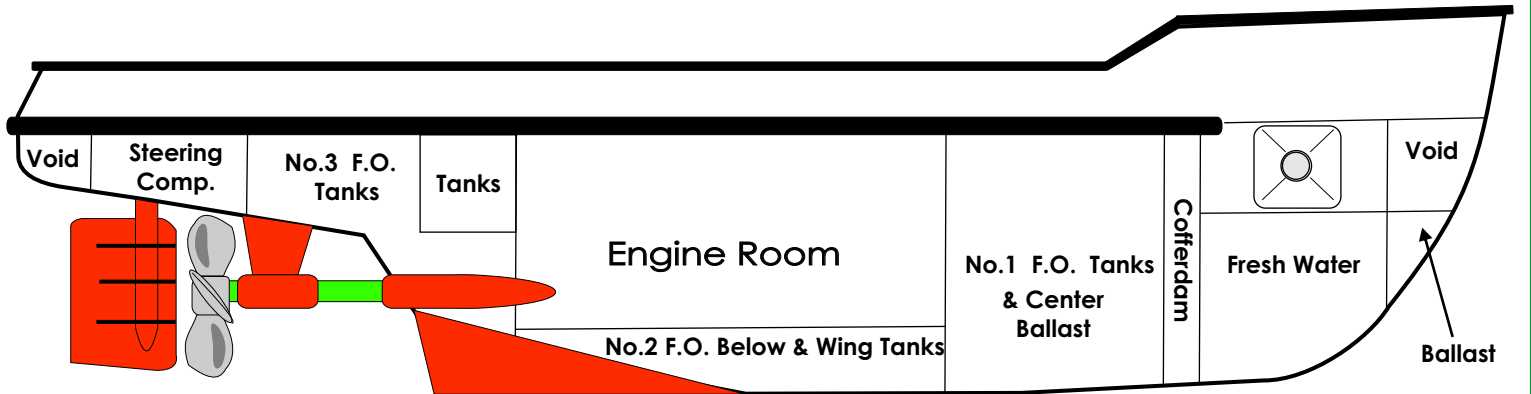


# TANK/COMPARTMENT LOCATION

Built into and above F.O. Tanks



<p><b>138' X 38' X 19'</b>  <b>TWIN SCREW TUG</b>  <b>BUILT BY: McDermott 1981</b>  <b>OFFICIAL Number 64367</b>  <b>HULL Number 239</b>  <b>H.P. 5,800</b>  <b>IMO No.8116001</b></p>	<p><b>CAPACITY SUMMARY</b></p> <p>FUEL OIL.....149,503          LUBE OIL.....1,115          BALLAST.....24,449          POT. WATER.....10,161          GREY WATER....3,163          SLOP TANK.....3,337</p>
--	---



# McKINLEY SEA