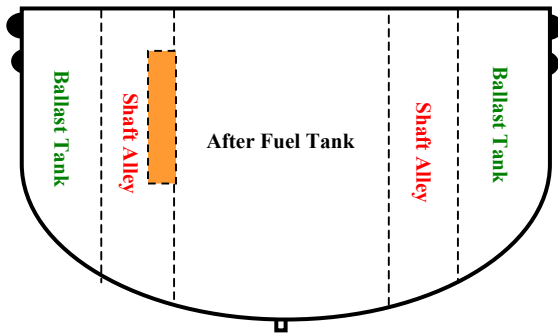
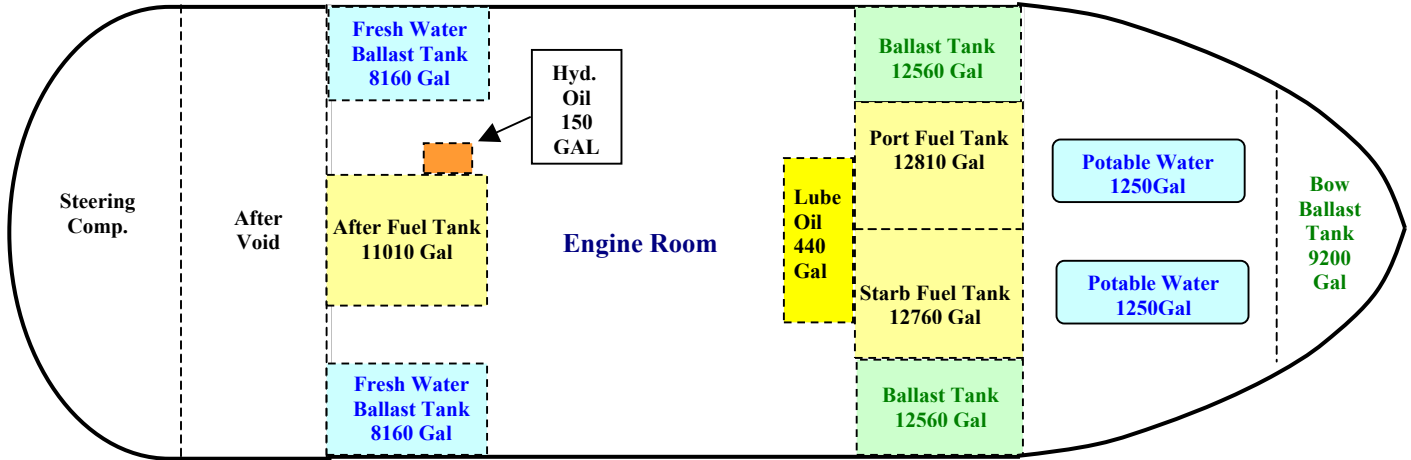


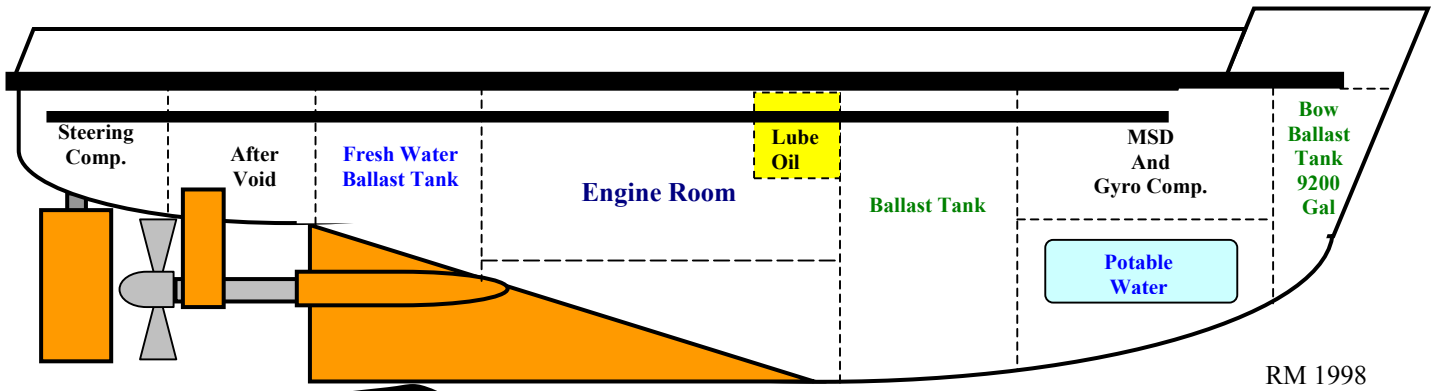
TANK/COMPARTMENT LOCATION



**110' X 28' X 13' 7" TWIN SCREW TUG
 BUILT BY: JAKOBSON SHIP YARD, INC.
 OFFICIAL No. 287444 - HULL NO. 406
 H.P. 2180**

CAPACITY SUMMARY

**FUEL OIL36,580 GALLONS
 LUBE OIL440 GALLONS
 BALLAST.....50,652 GALLONS
 POTABLE WATER.....2,500 GALLONS**



RM 1998



TUG MARYLAND