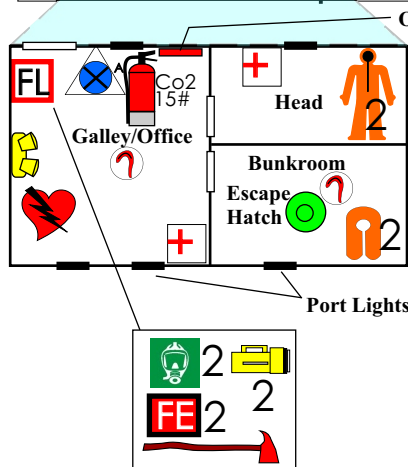
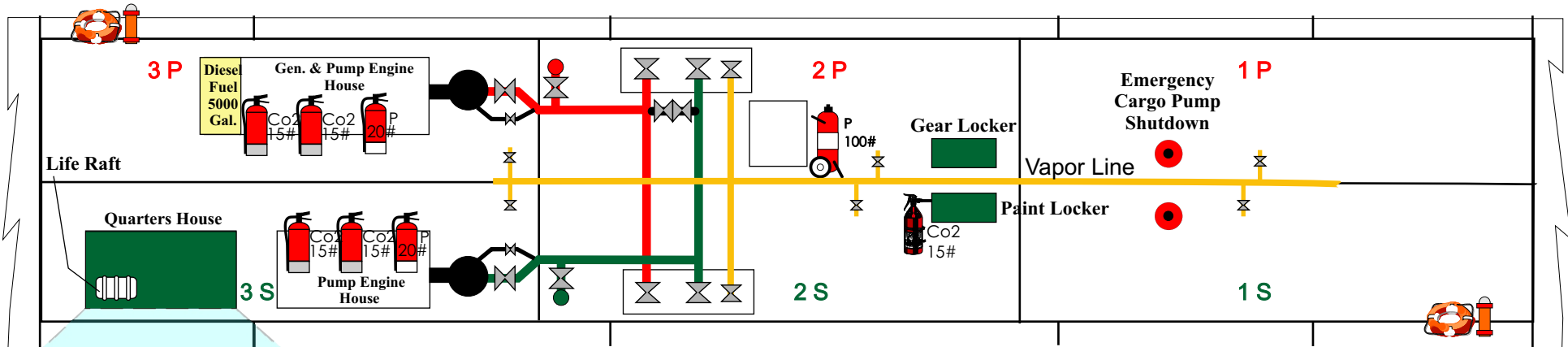


DBL 29

FIRE & SAFETY EQUIPMENT PLAN

- Smoke Alarm**
- Defibrillator**
- Co2 Extinguisher**
- Dry Chem Extinguisher**
- 100# B-V Dry Chemical Extinguisher**
- Life Ring & Life Ring w/Light**
- Remote Vent Shut Off**
- Pump Engine Shutdown**
- Life Jacket**
- First Aid Kit**
- SCBA**
- Flashlight**
- Emerg Lights**
- Fire Locker**
- Firemen's Outfit**
- Fire Axe**

Survival Suit



297'6" X 54' X 13'
Double Hull Barge
Year Built : 2006
Bollinger Hull 497
Official No. 1180995
IMO # 1588281
Gross Tons: 1754
Pumps - 2 Deepwells

CAPACITY - 28,000 BARRELS @100%

| | |
|-------------------------|--------------------------|
| 1 PORT - 4,850.4 | 1 STARB - 4,850.4 |
| 2 PORT - 4,486.2 | 2 STARB - 4,486.2 |
| 3 PORT - 4,697.1 | 3 STARB - 4,697.1 |

Loaded Draft 11.9'