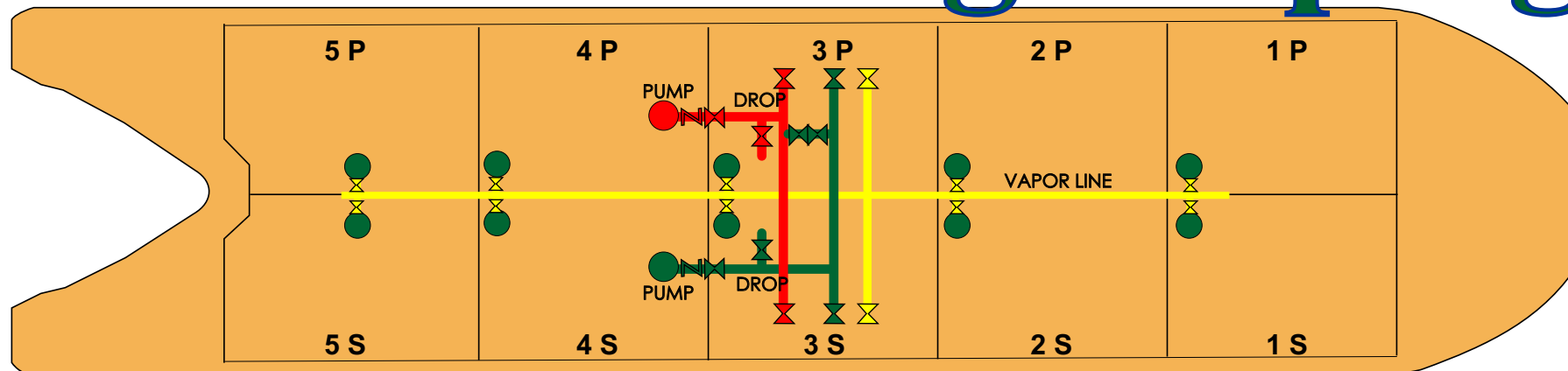


DBL 102 Cargo Piping



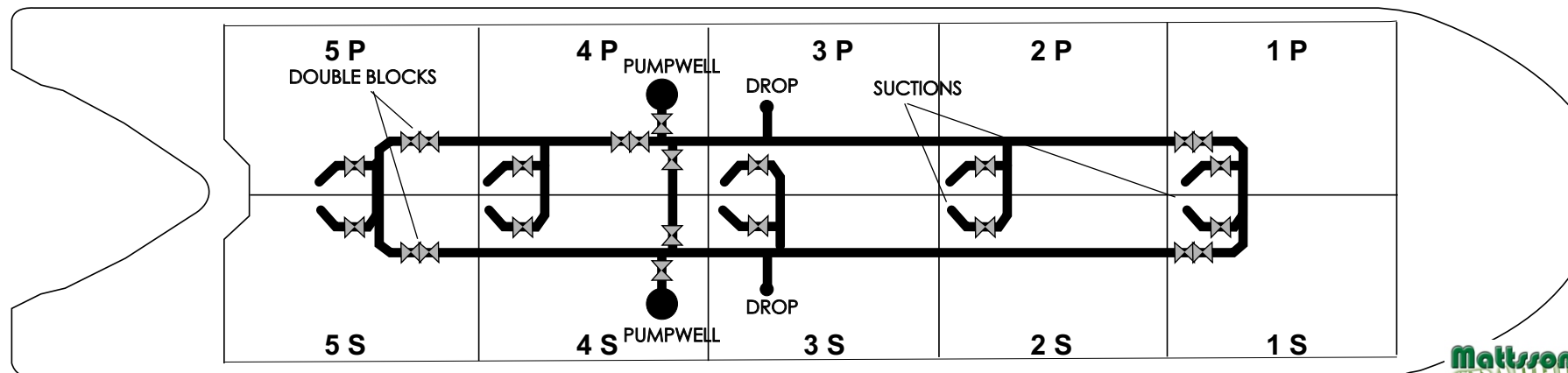
Above Deck Piping



399'11" X 74' X 25'
 OPA 90 DOUBLE HULL BARGE
 YEAR BUILT : 2002
 OFFICIAL No. 1146491
 IMO No. 9269788
 GROSS TONS: 6,214
 PUMPS - 2 DEEPWELLS

CAPACITY - 106,451 BARRELS
 @ 100% (Approx)

1 PORT - 10,238	1 STARB - 10,238
2 PORT - 10,835	2 STARB - 10,835
3 PORT - 10,835	3 STARB - 10,835
4 PORT - 10,835	4 STARB - 10,835
5 PORT - 10,482	5 STARB - 10,482



Below Deck Piping